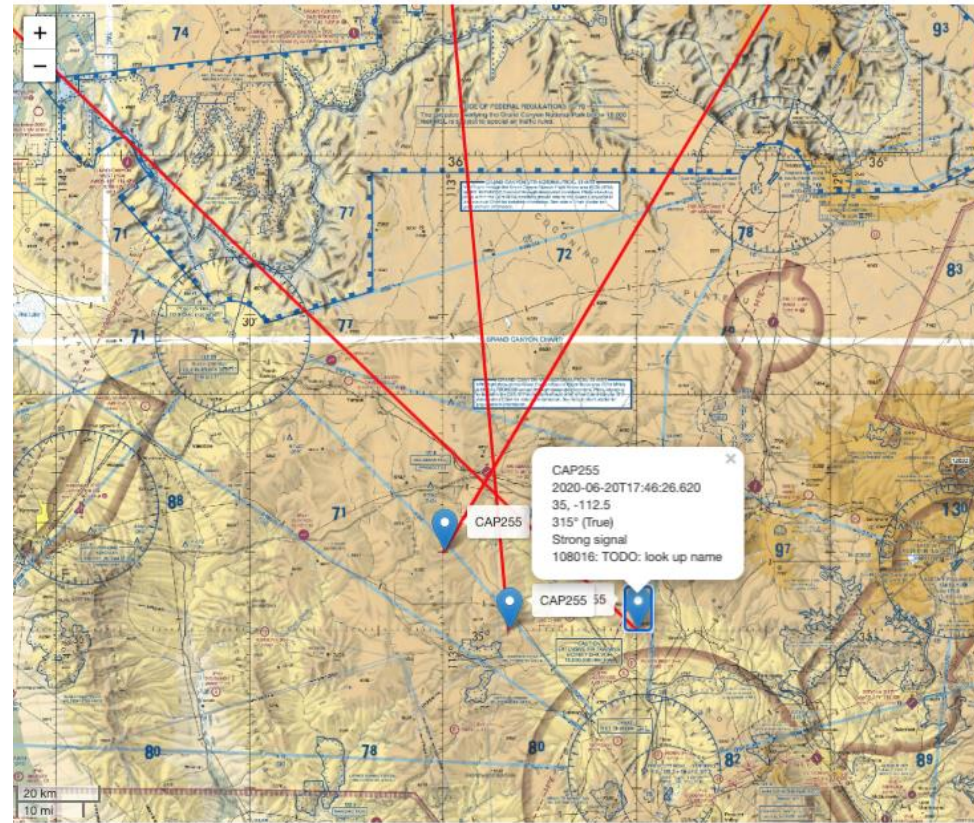


Beacon Hunter (Foxhunt replacement)

- Plots ELT bearings on a map
- Works on Windows, Mac, Android, iOS, Raspberry PI, unlike Foxhunt which only works on iOS devices.
- Data is accessible by field units and Mission Staff
- Aircraft ADSB track overlays bearing data
- Data visible on Google Earth
- Version optimized for Ground Team use on iOS and Android
- Position reporting for sUAS Team and Ground Team
- We control features and road map

Beacon Hunter on VFR Sectional Chart

AZ CAP Beacon Hunter: 20-RIDDLE-1001



Choose Map Type

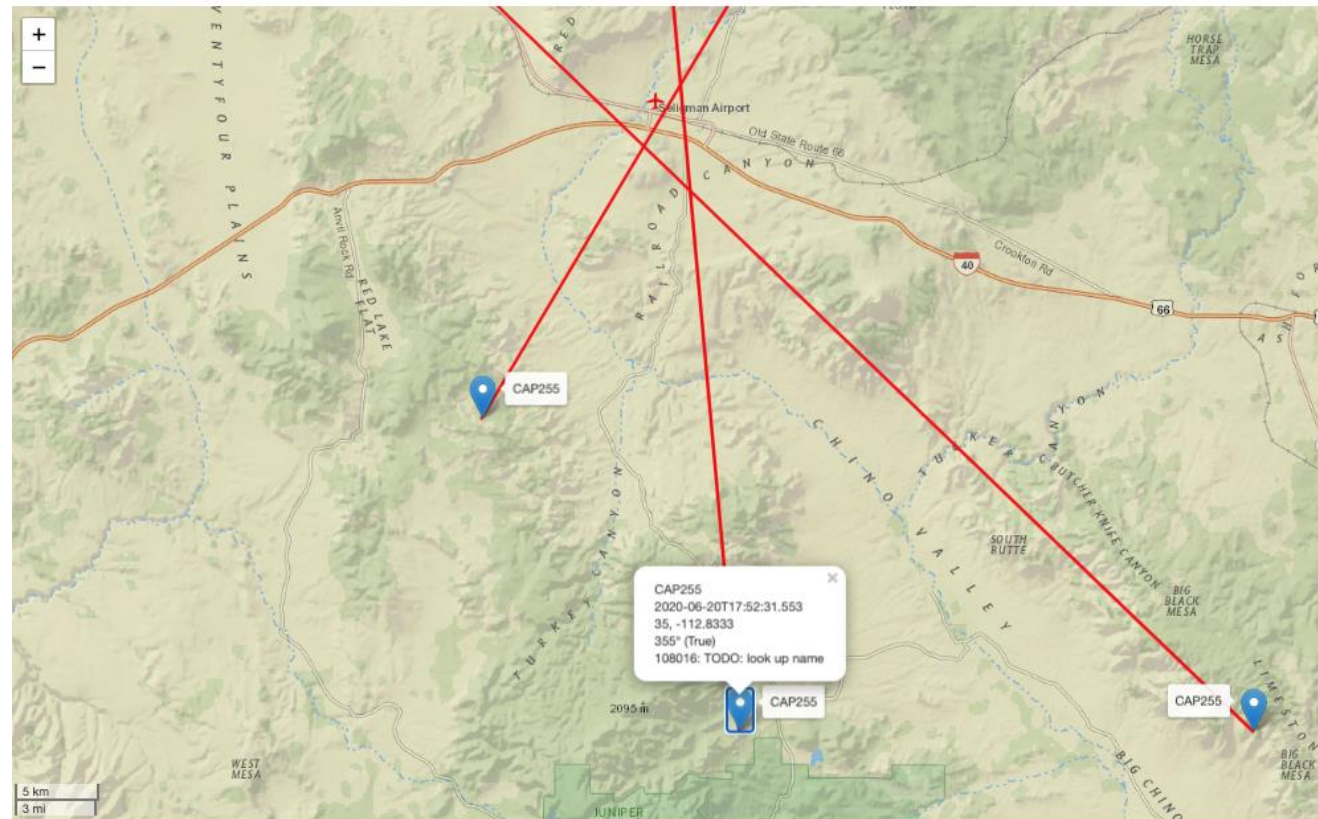
Choose your map type:

- ☐ National Geographic
- ☐ Terrain
- ☐ VFR Sectional
- ☐ Topographic
- ☒ Open Street

Submit

Beacon Hunter on Terrain Map

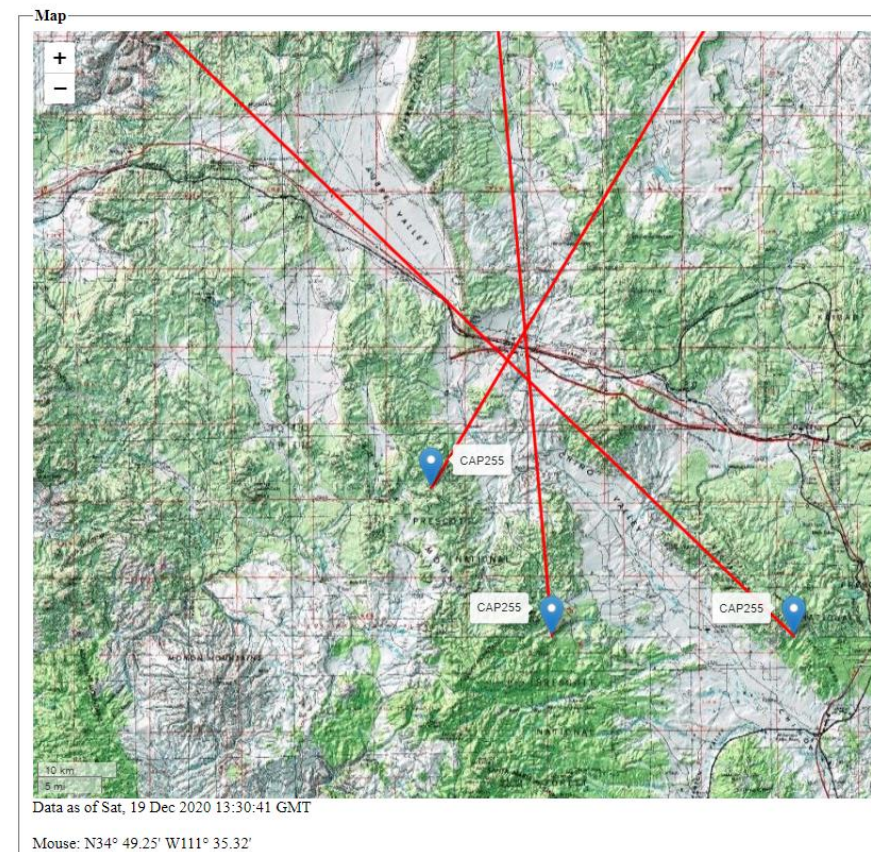
AZ CAP Beacon Hunter: 20-RIDDLE-1001



Data as of Sat, 11 Jul 2020 18:38:07 GMT

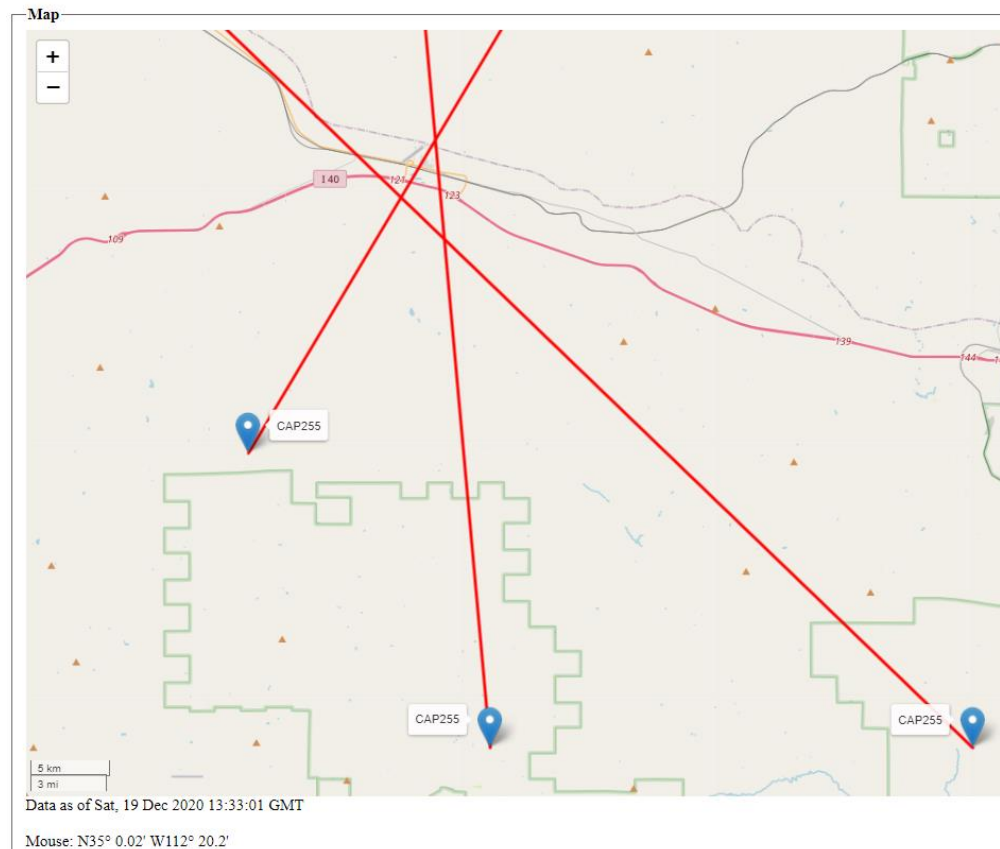
Beacon Hunter on Topo Map

AZ CAP Beacon Hunter Mission: [20-RIDDLE-1001]



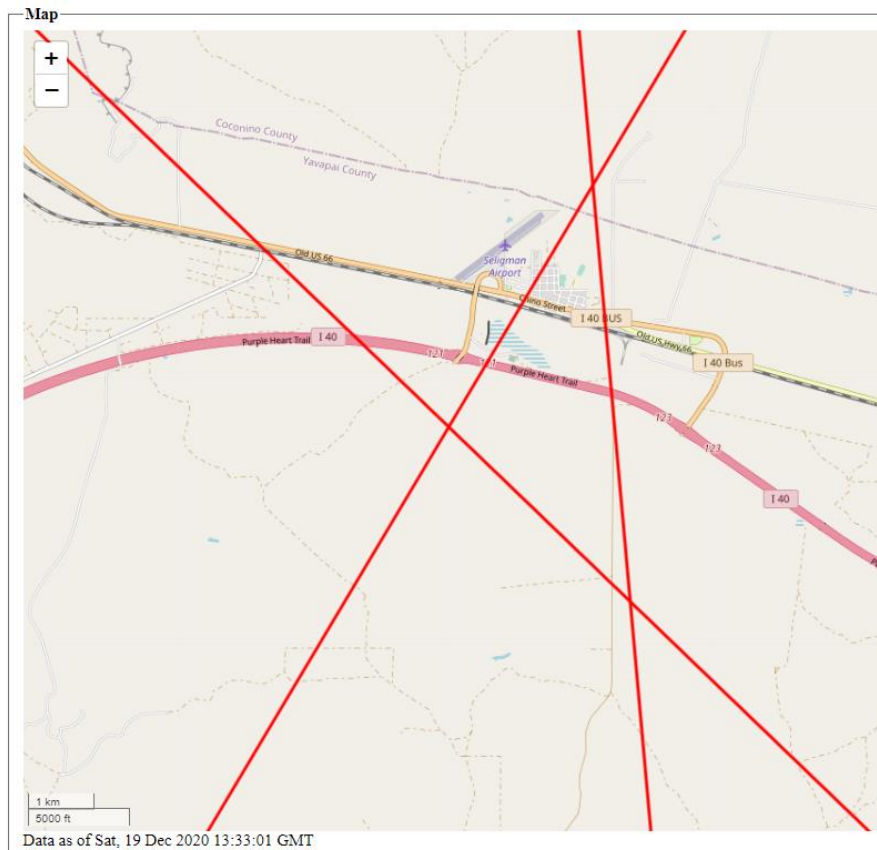
Beacon Hunter on OpenStreet Map

AZ CAP Beacon Hunter Mission: [20-RIDDLE-1001]



Beacon Hunter on OpenStreet Map

AZ CAP Beacon Hunter Mission: [20-RIDDLE-1001]



List of Bearings

AZ CAP Beacon Hunter Mission: [20-RIDDLE-1001]

Bearings

Sortie ▲ ▼	Call Sign ▲ ▼	Time ▲ ▼	Latitude ▲ ▼	Longitude ▲ ▼	Brg (T) ▲ ▼	Brg (M) ▲ ▼	Comment ▲ ▼	Warble Tone ▲ ▼
A1	CAP255	5:46 PM z	N35° 0.00'	W112° 30.00'	315	325	Strong signal	Not Provided
A1	CAP255	5:52 PM z	N35° 0.00'	W112° 50.00'	355	365		Not Provided
A1	CAP255	5:58 PM z	N35° 10.00'	W113° 0.00'	30	40		Not Provided

[Map](#) [Mission](#) [Missions](#) [Placemarks](#) [New Bearing](#)

Oops!

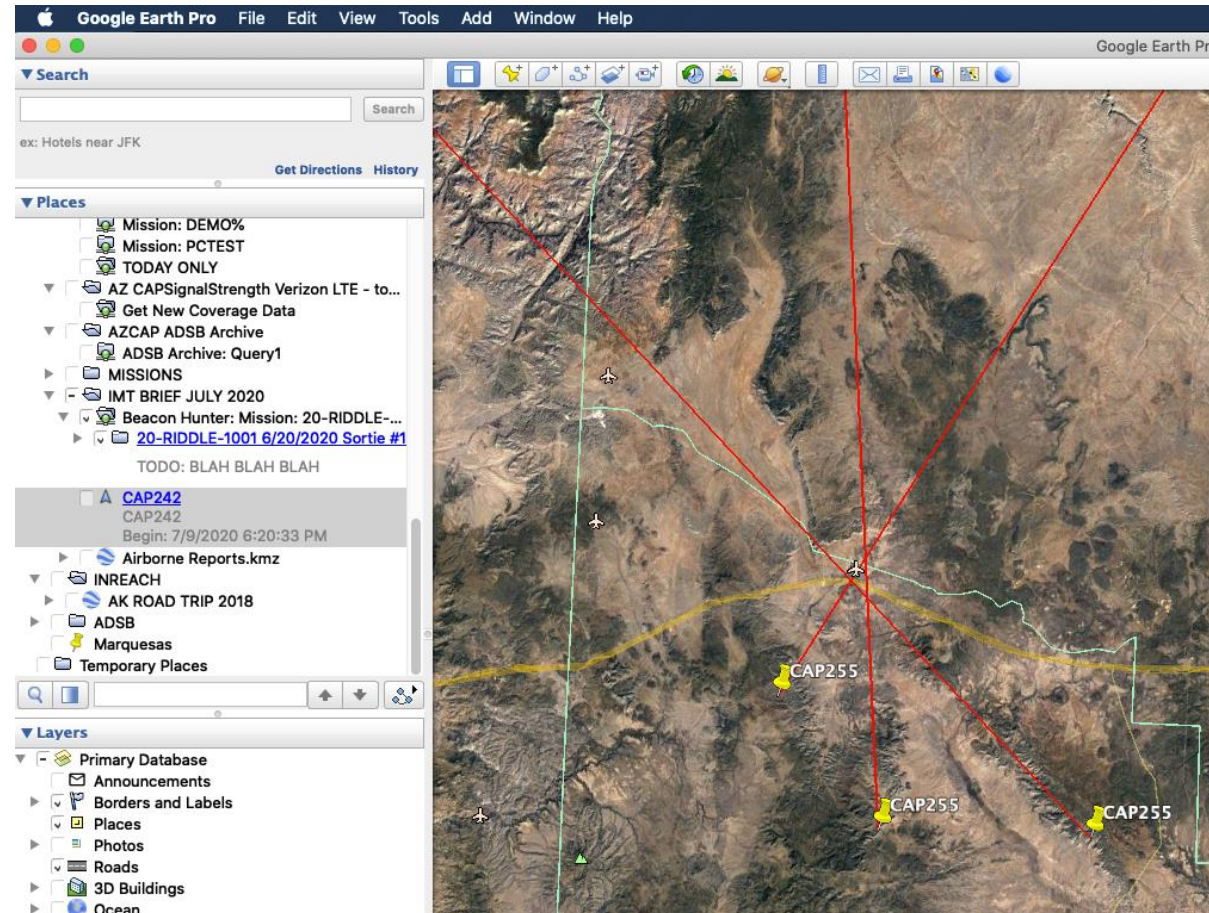
Edit Bearing: [20-RIDDLE-1001]

Property	Value
Mission#:	TEST COMBELICK ▾
CAP ID:	108016
Callsign:	CAP255 ▾
Sortie #:	1
Sortie Type:	<input checked="" type="radio"/> Air <input type="radio"/> Ground
ELT #:	1 Sequence # of this ELT for this sortie (if sortie is tracking multiple ELTs).
Time:	2020-06-20T17:52:31.553 z
Magnetic Bearing:	865 ▾
Latitude:	<div><div>! Value must be less than or equal to 360.</div><div><input type="text"/> ' N</div></div>
Longitude:	<div><div><input type="text"/> ° <input type="text"/> ' W</div><div>AZ, NM Only</div></div>
Altitude (feet MSL):	<input type="text"/>
ELT Frequency:	<input checked="" type="radio"/> Not Provided <input type="radio"/> 121.5 Mhz <input type="radio"/> 121.775 Mhz <input type="radio"/> 243.0 Mhz <input type="radio"/> 406.xxx Mhz
121.x Warble Tone Heard?	<input checked="" type="radio"/> Not Provided <input type="radio"/> Heard <input type="radio"/> Not Heard
406 Hex Code:	<input type="text"/>
Comment:	<input type="text"/>
Line Color:	Black ▾

Submit

Tran
So
A!

Beacon Hunter data on Google Earth

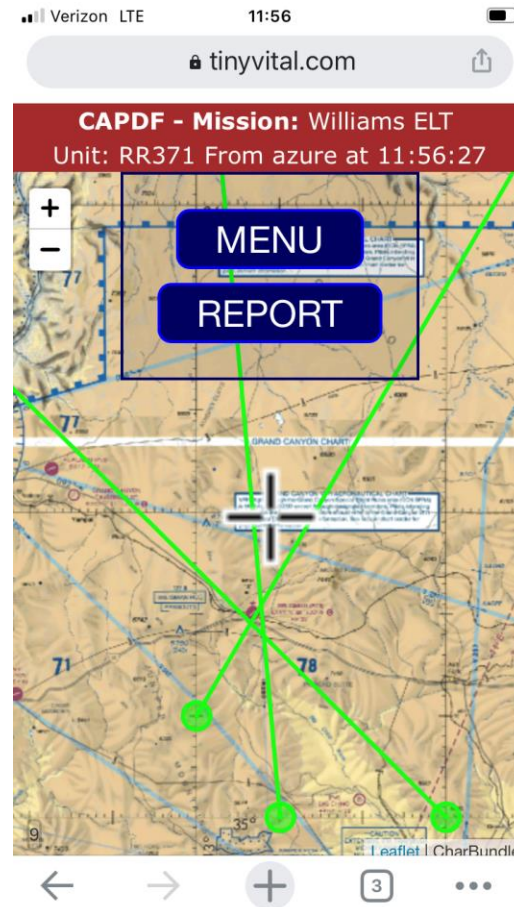


Beacon Hunter / CAPDF (Foxhunt Pro replacement)

Edit Bearing: [21-T-3732 NOV OPEX]

Property	Value
Mission#:	21-T-3732 NOV OPEX ▾
CAP ID:	562075
Callsign:	CAP247 ▾
Sortie #:	14
Sortie Type:	<input checked="" type="radio"/> Air <input type="radio"/> Ground
ELT #:	1 Sequence # of this ELT for this sortie (if sortie is tracking multiple ELTs).
Time:	2020-11-21T15:23:00 z
Magnetic Bearing:	291
Latitude:	33 ° 51.60 ' N AZ, NM Only
Longitude:	112 ° 30.00 ' W AZ, NM Only
Altitude (feet MSL):	789
ELT Frequency:	<input type="radio"/> Not Provided <input type="radio"/> 121.5 Mhz <input type="radio"/> 121.775 Mhz <input type="radio"/> 243.0 Mhz <input checked="" type="radio"/> 406.xxx Mhz
121.x Warble Tone Heard?	<input type="radio"/> Not Provided <input checked="" type="radio"/> Heard <input type="radio"/> Not Heard
406 Hex Code:	
Comment:	CAP247 LOP#1
Line Color:	Cyan ▾

CAPDF – GT Beacon Hunter



CAPDF – GT or Drone Team Position Report

Verizon 12:07

tinyvital.com

CAPDF - Mission: Williams ELT
Unit: RR371 From azure at 12:07:03

ENTER POSITION REPORT

dd mm.xxxx

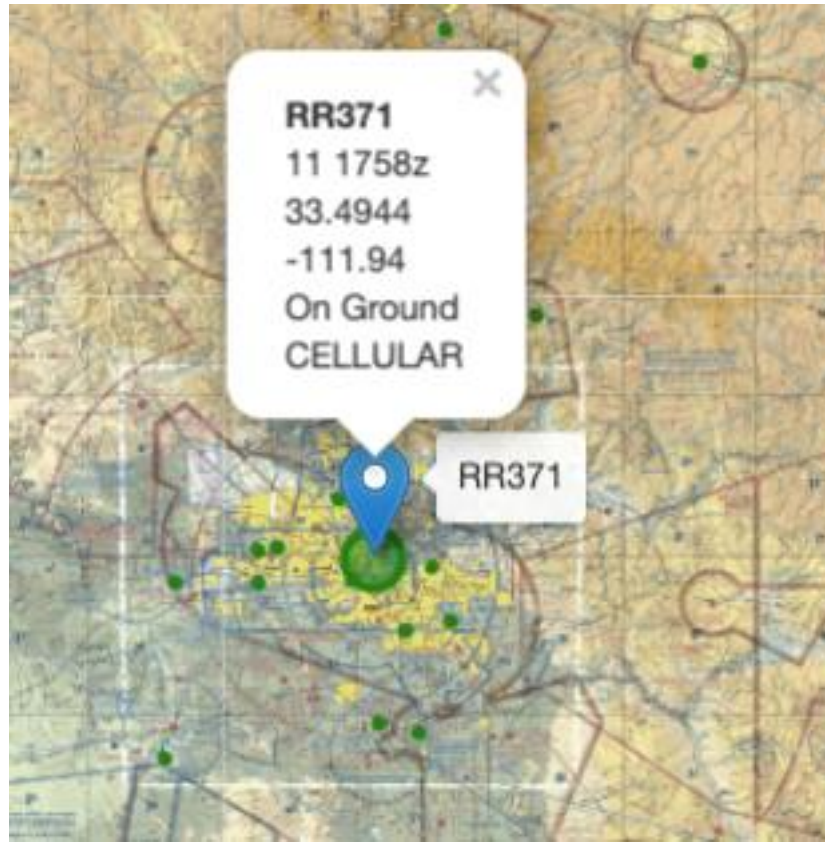
Lat:	33 29.667	
Long:	-111 56.40	
Alt MSL:	1261	ft
Comment:	Ops norm	ft

CANCEL EDIT

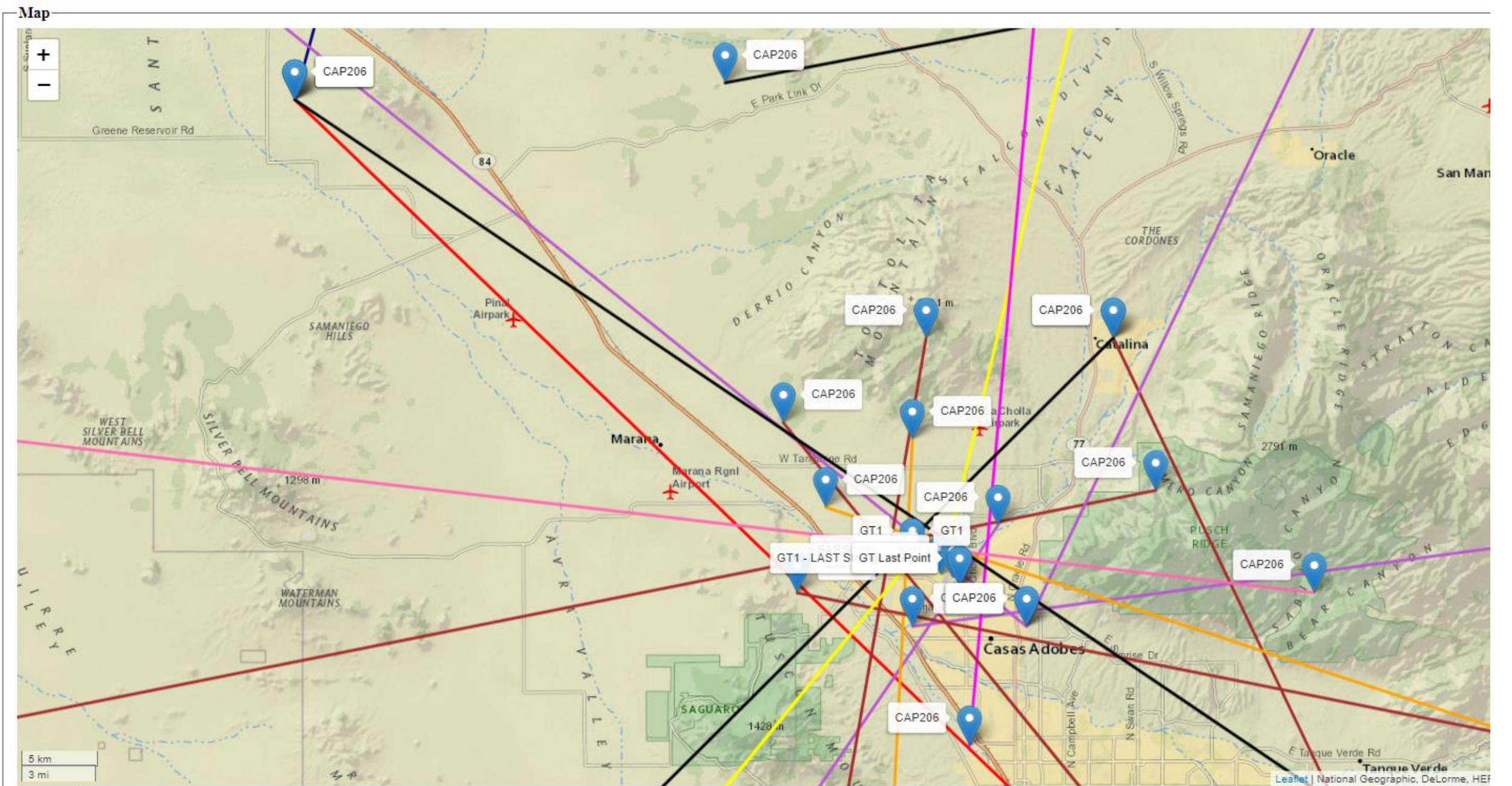
SUBMIT

← → + 3 ...

CAPDF (new Foxhunt) Data

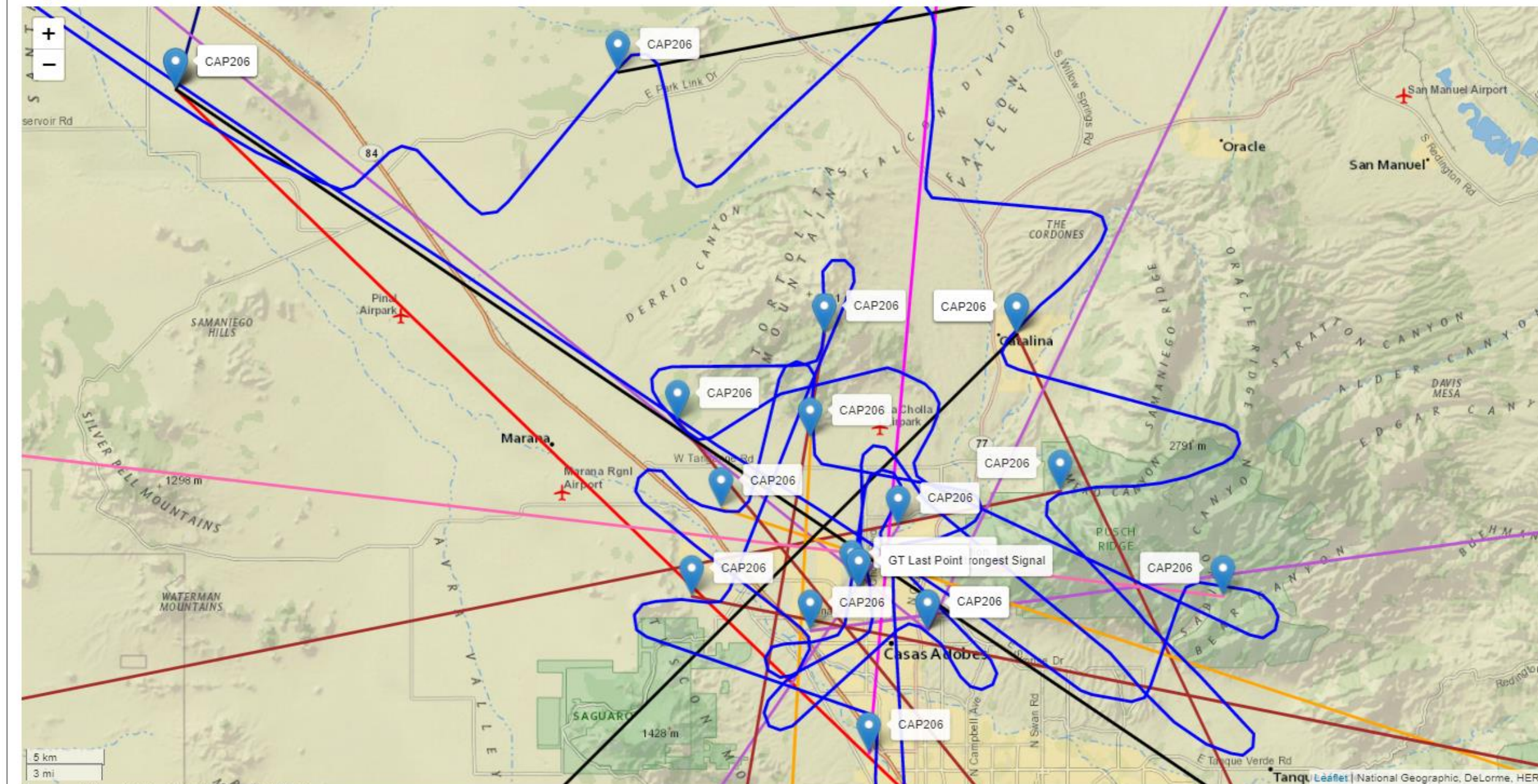


AZ CAP Beacon Hunter Mission: [20-M-0703]



AZ CAP Beacon Hunter Mission: [20-M-0703]

Map



Data as of Sat, 19 Dec 2020 01:20:46 GMT

AZ CAP Beacon Hunter Mission: [20-M-0703]

Bearings

Sortie ▲ ▼	Call Sign ▲ ▼	Time ▲ ▼	Latitude ▲ ▼	Longitude ▲ ▼	Brg (T) ▲ ▼	Brg (M) ▲ ▼	Comment ▲ ▼	Warble Tone ▲ ▼	Frequency (Mhz) ▲ ▼	Color ▲ ▼	Action ▲ ▼	Edit ▲ ▼	Delete ▲ ▼	Map ▲ ▼
G1	GT1	1:29 AM z	N32° 22.20'	W111° 3.00'	220	210		Yes	121.500	Yellow	Hide	Edit	Delete	Map
A1	CAP206	5:39 AM z	N32° 38.40'	W111° 28.80'	15	5		No	406.000	Navy	Hide	Edit	Delete	Map
A1	CAP206	5:43 AM z	N32° 38.40'	W111° 28.80'	133	123		No	Not Provided	Red	Hide	Edit	Delete	Map
A1	CAP206	6:09 AM z	N32° 30.00'	W110° 54.60'	154	144		No	406.000	Brown	Hide	Edit	Delete	Map
A1	CAP206	6:18 AM z	N32° 24.60'	W110° 52.80'	260	250	LINE #4	No	406.000	Brown	Hide	Edit	Delete	Map
A1	CAP206	6:37 AM z	N32° 19.80'	W111° 3.00'	81	71	First 121.5 Line	No	121.500	Purple	Hide	Edit	Delete	Map
A1	CAP206	6:45 AM z	N32° 23.40'	W110° 59.40'	215	205	LINE #2 121.5	Yes	121.500	Purple	Hide	Edit	Delete	Map
A1	CAP206	6:53 AM z	N32° 19.80'	W110° 58.20'	310	300	Line #3 121.5	Yes	121.500	Purple	Hide	Edit	Delete	Map
A1	CAP206	6:58 AM z	N32° 19.80'	W110° 58.20'	25	15	Line #4 121.5	No	121.500	Purple	Hide	Edit	Delete	Map
A1	CAP206	7:01 AM z	N32° 24.00'	W111° 6.60'	107	97	Line #5 121.5	No	121.500	Orange	Hide	Edit	Delete	Map
A1	CAP206	7:08 AM z	N32° 26.40'	W111° 3.00'	183	173	Line #6 121.5	Yes	121.500	Orange	Hide	Edit	Delete	Map
A1	CAP206	7:14 AM z	N32° 22.80'	W111° 58.80'	262	252	Line of Pos #7 121.5	Yes	121.500	Orange	Hide	Edit	Delete	Map
A1	CAP206	7:16 AM z	N32° 22.80'	W111° 58.80'	262	252	Line #7 121.5	Yes	121.500	Orange	Hide	Edit	Delete	Map
G1	GT1	7:18 AM z	N32° 21.60'	W111° 1.80'	13	3		Yes	121.500	Yellow	Hide	Edit	Delete	Map
A1	CAP206	7:25 AM z	N32° 15.60'	W111° 0.60'	5	355	Line #8 121.5	No	121.500	Magenta	Hide	Edit	Delete	Map
A1	CAP206	7:31 AM z	N32° 21.00'	W111° 7.80'	100	90	Line #9	Yes	121.500	Brown	Hide	Edit	Delete	Map
A1	CAP206	7:41 AM z	N32° 30.00'	W111° 2.40'	190	180	Line #10 121.5	No	121.500	Brown	Hide	Edit	Delete	Map
A1	CAP206	7:44 AM z	N32° 27.00'	W111° 8.40'	140	130	Line #11	No	121.500	Brown	Hide	Edit	Delete	Map
A1	CAP206	7:50 AM z	N32° 26.40'	W111° 58.20'	212	202	Line #12	No	121.500	Gold	Hide	Edit	Delete	Map
A1	CAP206	8:01 AM z	N32° 21.00'	W110° 46.20'	278	268	Line #13	Yes	121.500	Pink	Hide	Edit	Delete	Map
G1	GT1	8:14 AM z	N32° 22.20'	W111° 3.00'	220	210		Yes	121.500	Yellow	Hide	Edit	Delete	Map
A1	CAP206	9:31 AM z	N32° 38.40'	W111° 28.80'	123	113	Correction LOP1 (Best Guess	Yes	406.000	Black	Hide	Edit	Delete	Map
A1	CAP206	9:37 AM z	N32° 39.00'	W111° 10.80'	78	68	Correction LOP2 (Best Guess)	Yes	406.000	Black	Hide	Edit	Delete	Map
A1	CAP206	9:45 AM z	N32° 30.00'	W110° 54.60'	226	216	Corrected - Best Guess Radio Notes	Yes	406.000	Black	Hide	Edit	Delete	Map

[Map](#) [Mission](#) [Missions](#) [Placemarks](#) [New Bearing](#)

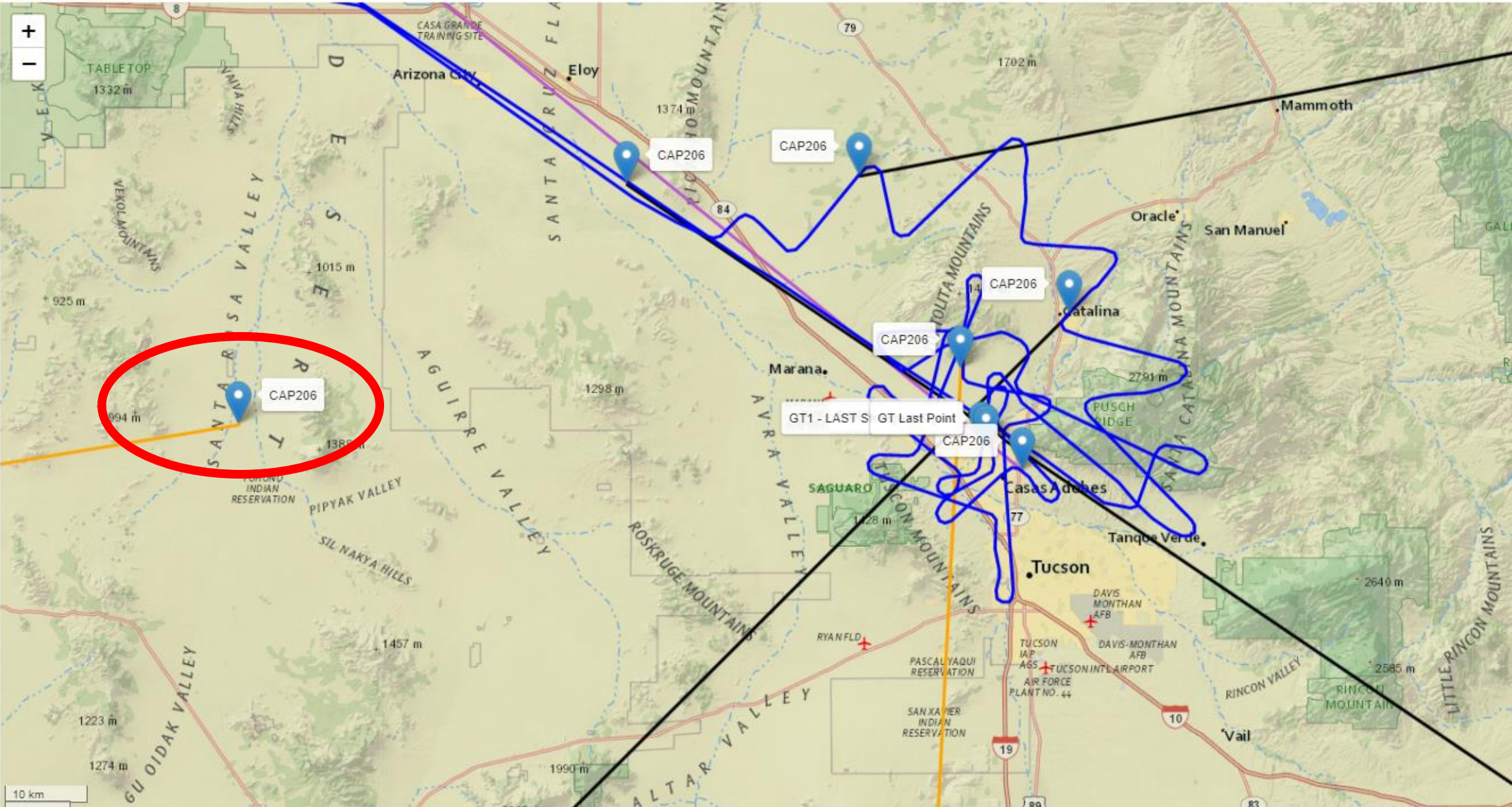
AZ CAP Beacon Hunter Mission: [20-M-0703]

Bearings

Sortie ▲ ▼	Call Sign ▲ ▼	Time ▲ ▼	Latitude ▲ ▼	Longitude ▲ ▼	Brg (T) ▲ ▼	Brg (M) ▼	Comment ▲ ▼	Warble Tone ▲ ▼	Frequency (Mhz) ▲ ▼	Color ▲ ▼	A
G1	GT1	7:18 AM z	N32° 21.60'	W111° 1.80'	13	3		Yes	121.500	Yellow	H
A1	CAP206	5:39 AM z	N32° 38.40'	W111° 28.80'	15	5		No	406.000	Navy	H
A1	CAP206	6:58 AM z	N32° 19.80'	W110° 58.20'	25	15	Line #4 121.5	No	121.500	Purple	H
A1	CAP206	9:37 AM z	N32° 39.00'	W111° 10.80'	78	68	Correction LOP2 (Best Guess)	Yes	406.000	Black	H
A1	CAP206	6:37 AM z	N32° 19.80'	W111° 3.00'	81	71	First 121.5 Line	No	121.500	Purple	H
A1	CAP206	7:31 AM z	N32° 21.00'	W111° 7.80'	100	90	Line #9	Yes	121.500	Brown	H
A1	CAP206	7:01 AM z	N32° 24.00'	W111° 6.60'	107	97	Line #5 121.5	No	121.500	Orange	H
A1	CAP206	9:31 AM z	N32° 38.40'	W111° 28.80'	123	113	Correction LOP1 (Best Guess	Yes	406.000	Black	H
A1	CAP206	5:43 AM z	N32° 38.40'	W111° 28.80'	133	123		No	Not Provided	Red	H
A1	CAP206	7:44 AM z	N32° 27.00'	W111° 8.40'	140	130	Line #11	No	121.500	Brown	H
A1	CAP206	6:09 AM z	N32° 30.00'	W110° 54.60'	154	144		No	406.000	Brown	H
A1	CAP206	7:08 AM z	N32° 26.40'	W111° 3.00'	183	173	Line #6 121.5	Yes	121.500	Orange	H
A1	CAP206	7:41 AM z	N32° 30.00'	W111° 2.40'	190	180	Line #10 121.5	No	121.500	Brown	H
A1	CAP206	7:50 AM z	N32° 26.40'	W111° 58.20'	212	202	Line #12	No	121.500	Gold	H
A1	CAP206	6:45 AM z	N32° 23.40'	W110° 59.40'	215	205	LINE #2 121.5	Yes	121.500	Purple	H
G1	GT1	1:29 AM z	N32° 22.20'	W111° 3.00'	220	210		Yes	121.500	Yellow	H
G1	GT1	8:14 AM z	N32° 22.20'	W111° 3.00'	220	210		Yes	121.500	Yellow	H
A1	CAP206	9:45 AM z	N32° 30.00'	W110° 54.60'	226	216	Corrected - Best Guess Radio Notes	Yes	406.000	Black	H
A1	CAP206	6:18 AM z	N32° 24.60'	W110° 52.80'	260	250	LINE #4	No	406.000	Brown	H
A1	CAP206	7:14 AM z	N32° 22.80'	W111° 58.80'	262	252	Line of Pos #7 121.5	Yes	121.500	Orange	H
A1	CAP206	7:16 AM z	N32° 22.80'	W111° 58.80'	262	252	Line #7 121.5	Yes	121.500	Orange	H
A1	CAP206	8:01 AM z	N32° 21.00'	W110° 46.20'	278	268	Line #13	Yes	121.500	Pink	H
A1	CAP206	6:53 AM z	N32° 19.80'	W110° 58.20'	310	300	Line #3 121.5	Yes	121.500	Purple	H
A1	CAP206	7:25 AM z	N32° 15.60'	W111° 0.60'	5	355	Line #8 121.5	No	121.500	Magenta	H

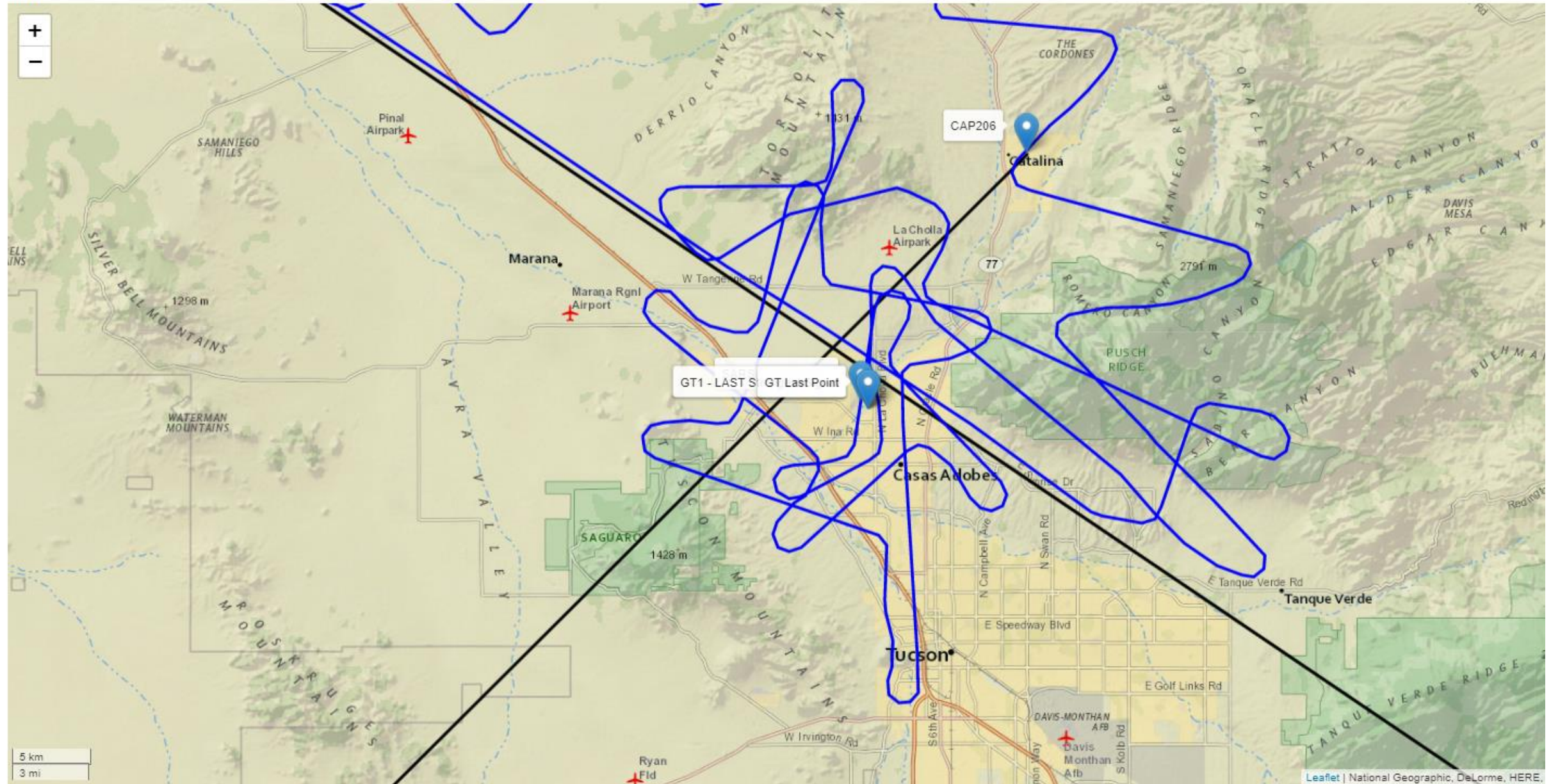
AZ CAP Beacon Hunter Mission: [20-M-0703]

Map



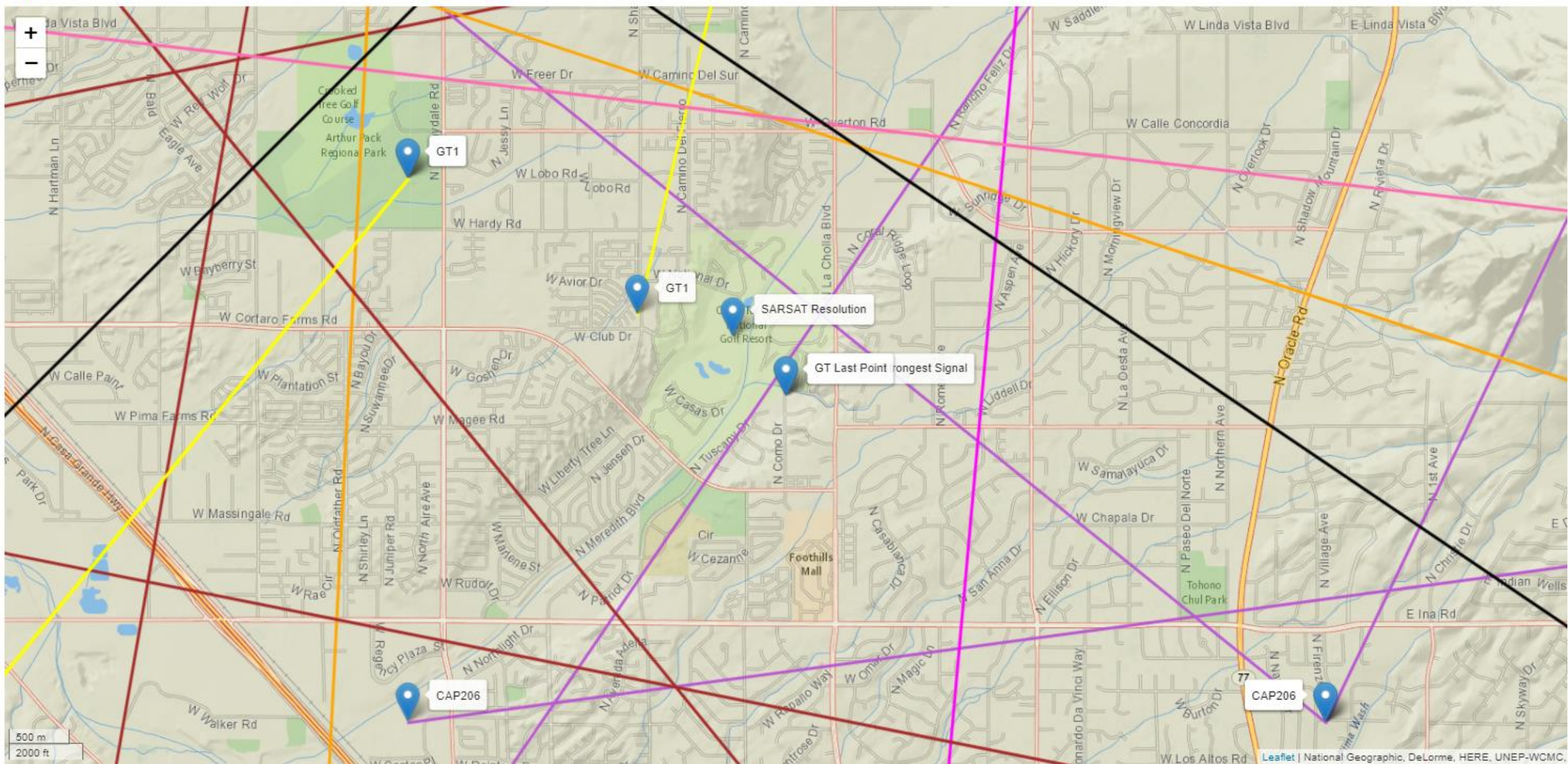
AZ CAP Beacon Hunter Mission: [20-M-0703]

—Map—



Data as of Sat, 19 Dec 2020 01:13:38 GMT

-Map



Data as of Sat, 19 Dec 2020 01:29:16 GMT

[Bearings](#) [Map](#) [Mission](#) [Missions](#) [Placemarks](#) [New Bearing](#) [New Placemark](#)

Filter bearings by sortie:

- ☒ A1 CAP206
- ☒ G1 GT1

Apply Filter

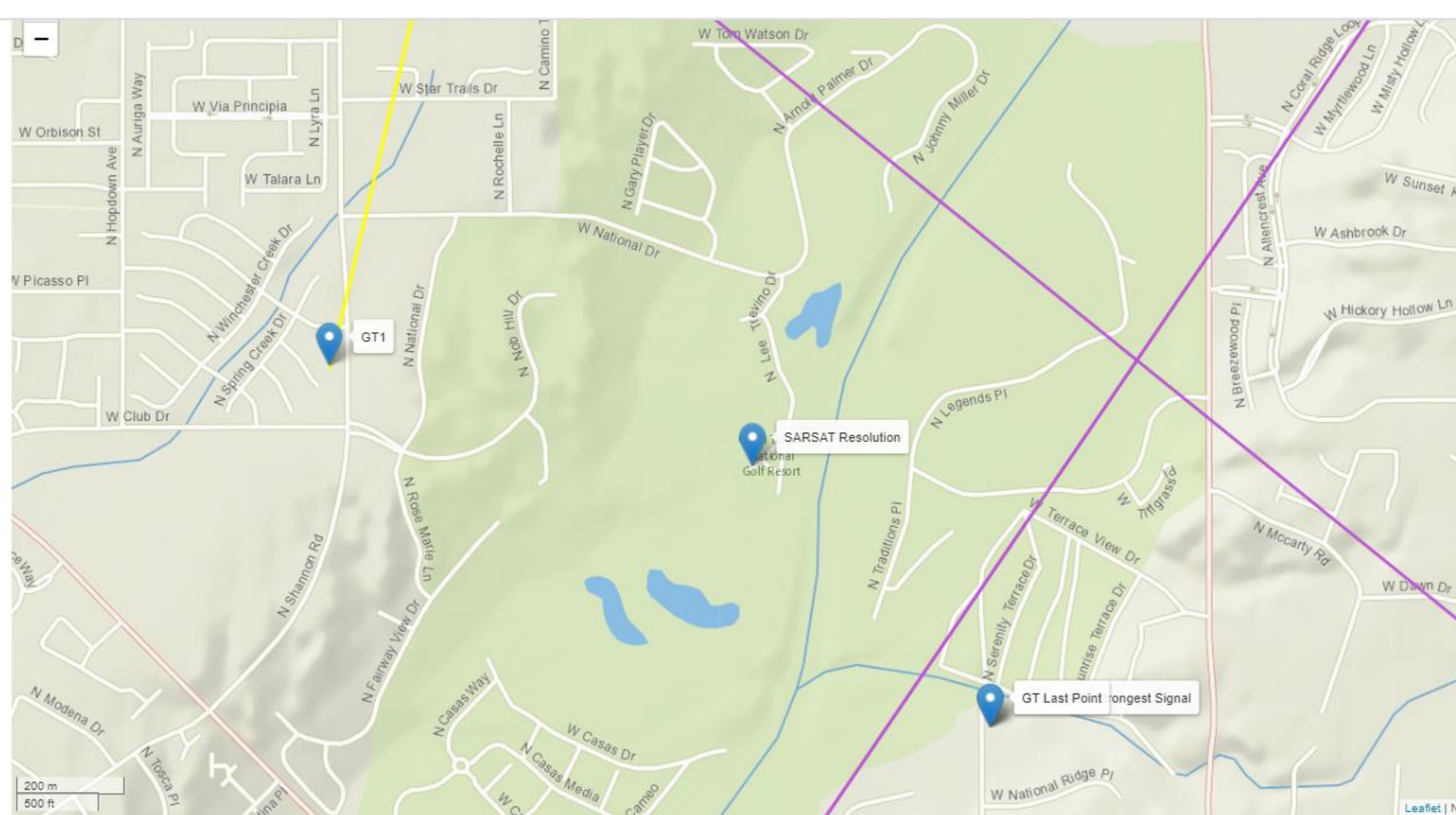
Select All

Unselect All

Choose your map type:

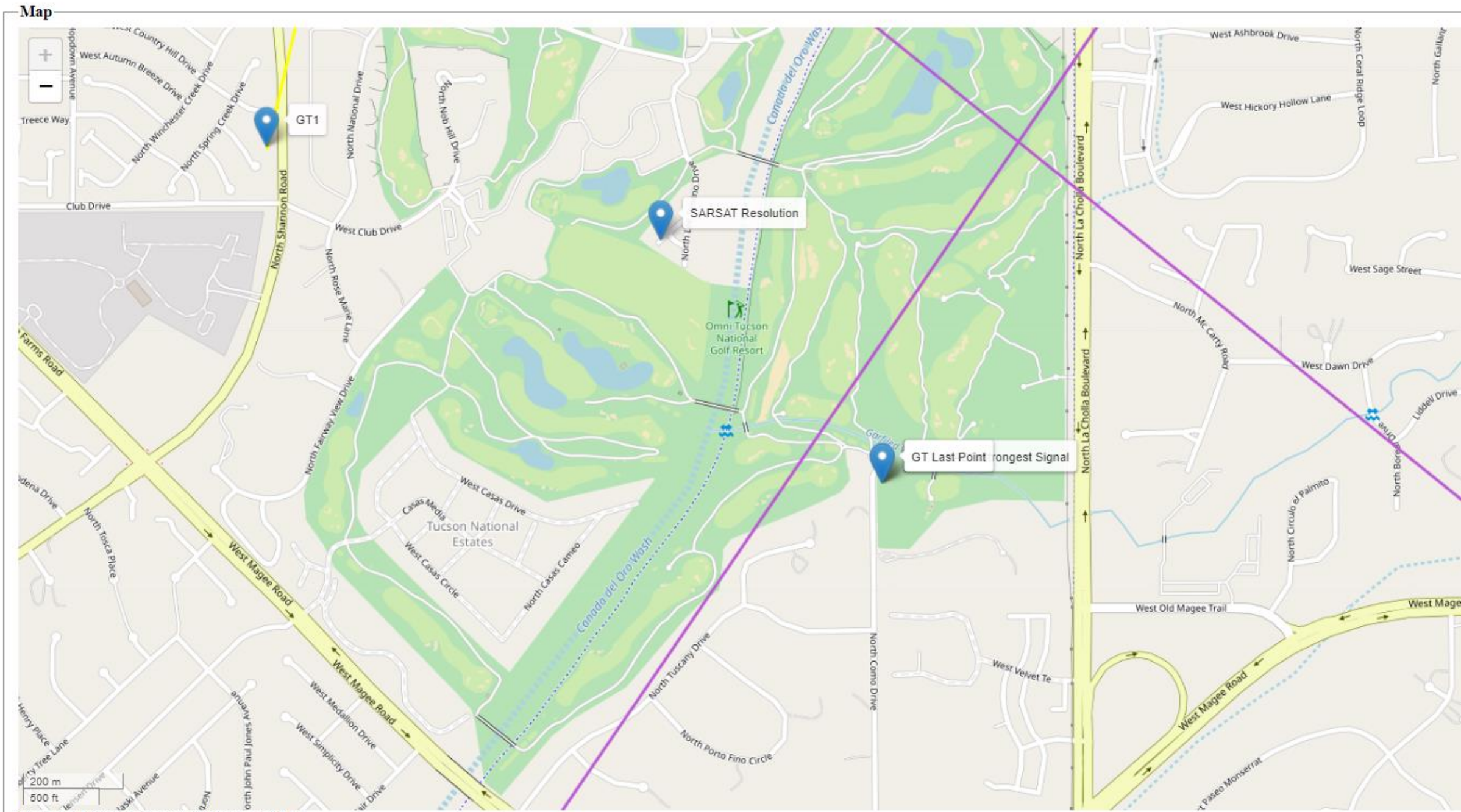
- ☐ National Geographic
- ☐ Terrain
- ☐ VFR Sectional
- ☐ Topographic
- ☒ Open Street

Submit



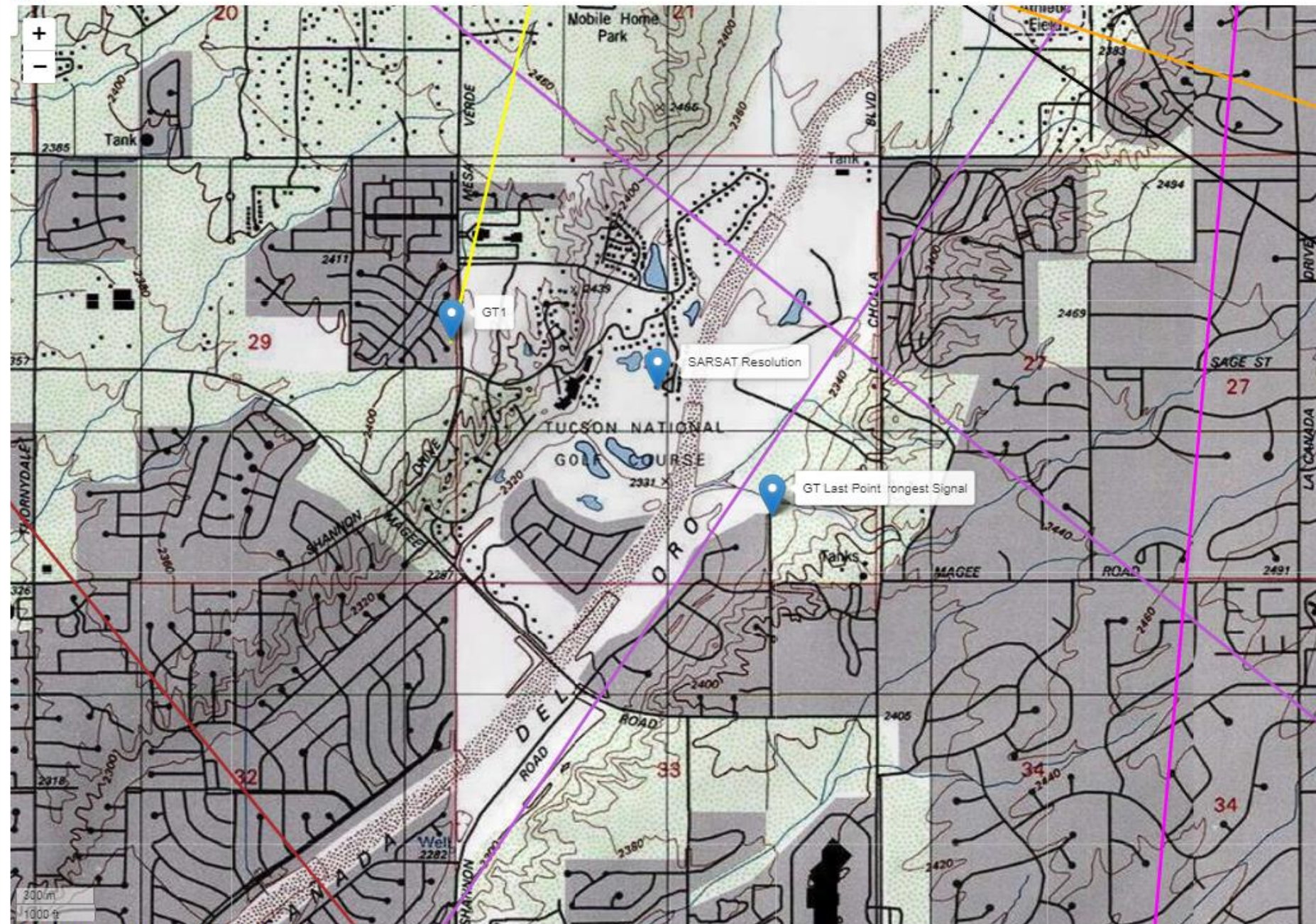
Data as of Sat, 19 Dec 2020 01:31:19 GMT

AZ CAP Beacon Hunter Mission: [20-M-0703]



AZ CAP Beacon Hunter Mission: [20-M-0703]

Map



Data as of Sat, 19 Dec 2020 01:36:20 GMT

Beacon Hunter – Take Aways

- Aircraft ADSB track overlays bearing data
- Web based ELT bearing mapping tool
- Windows, Mac, iOS, Android, Raspberry PI , unlike Foxhunt which only works on iOS devices.
- Data shared between field units and mission staff
- Visible in web app or Google Earth
- Access web app from CACTUS Mission Main Page
- GT / Drone team position reporting

CS 203 Organizational Assignment List ICS 204 Assignment Status ICS 205 Radio Communications Plan		
MISSION MAIN MENU		
MISSION: 20-V-0001		
Last Refreshed: 07/11/2020 23:50 ZULU		
MISSION STATUS: OPEN		
This is a test mission for training		
Edit Mission Information		
Email Status Report View/Print Status Report		
to track	<div>Activity Information</div> <div>Active Tasks: 04</div> <div>Completed Tasks: 01</div> <div>Active Air Sorties: 03</div> <div>Total Air Sorties: 06</div> <div>Active Ground Sorties: 01</div> <div>Total Ground Sorties: 01</div> <div>Sorties Overdue For Contact: 02</div>	
	ARIZONA WING ONLINE RESOURCES	
	Aircraft / Ground Team Tracking (SPOT ADSB, Google Earth, etc.)	
	AZ CAP Beacon Hunter	